

Slowing Down the Mouse Double Click Speed in Windows XP

- Open the Start menu by clicking on the **Start** button.
- Click on **Settings**.
- Click on **Control Panel**.
- Double click on **Mouse**. The mouse properties page should be displayed (see fig. 1)

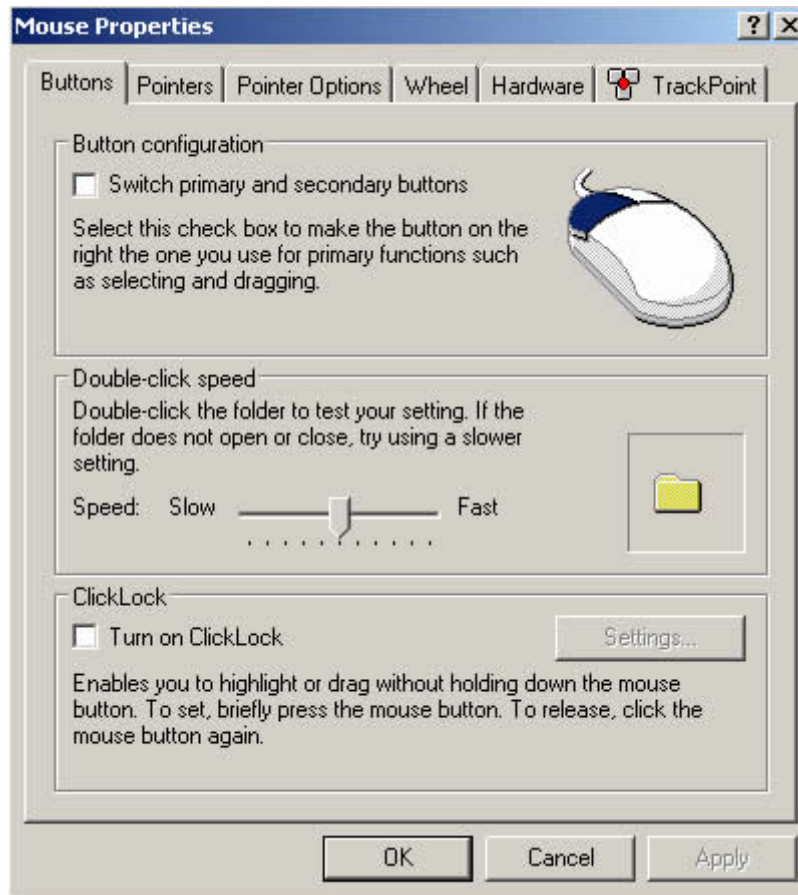


Fig 1

- If you are not already looking at the **Buttons tab**, click on.
- Double click on the **picture of a folder** to set the double click speed. If the folder does not open or close you will need to slow down the double click speed of your mouse. Do this by **clicking** and **dragging** the **slider towards slow**.
- Click **Apply** and **OK** or press **Enter** to confirm your choice and exit the mouse properties.

Please Note: This information is provided for the purposes of information only, and should not be construed as a recommendation. Prices and details are subject to change so please confirm details with supplier.