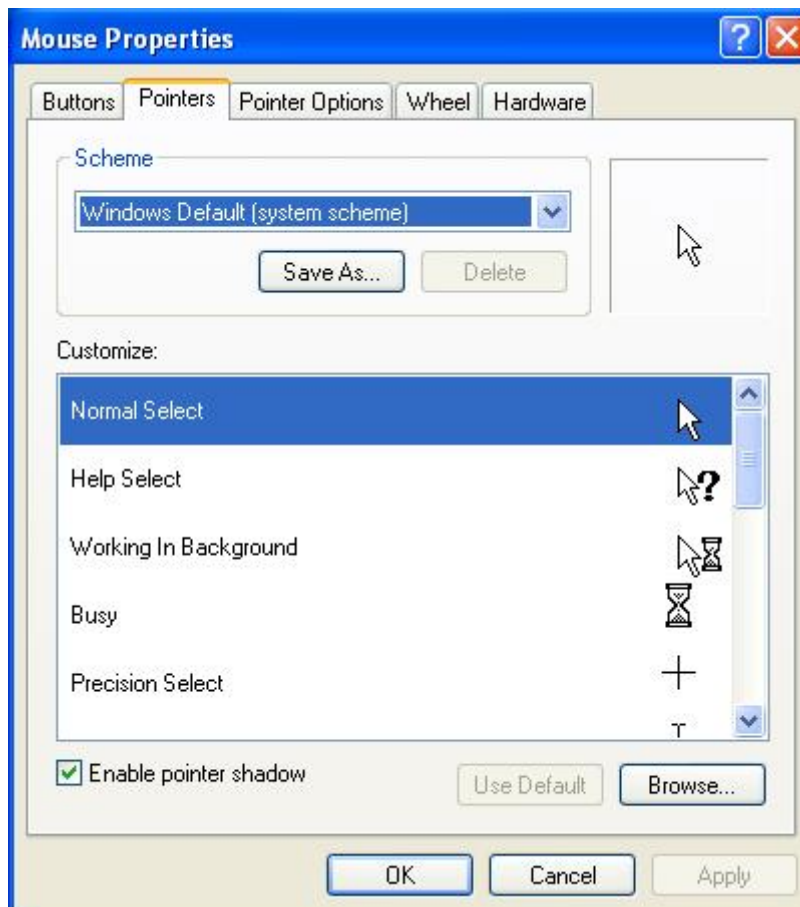


## Enlarging Your Mouse Pointer in Windows XP

- Open the Start menu by clicking on the **Start** button.
- Click on **Settings**.
- Click on **Control Panel**
- Double click on **Mouse**. The mouse properties page should be displayed.



- Click on the **Pointer** tab.
- Underneath **Scheme** is a **drop down box** which contains predefined sets of mouse pointers you can use. Click on this box.
- Use the up and down arrow keys on the keyboard to move through the list. As you do so, you will see the pictures changing to reflect the scheme that is highlighted at the time. Some of these sets are labelled as Windows Standard (Large), Windows Standard (Extra Large) or Windows Inverted schemes - these are the ones you should try first.

To choose a scheme either **click on it** or if it is already highlighted press the **Enter** key on the keyboard.

---

**Please Note:** This information is provided for the purposes of information only, and should not be construed as a recommendation. Prices and details are subject to change so please confirm details with supplier.