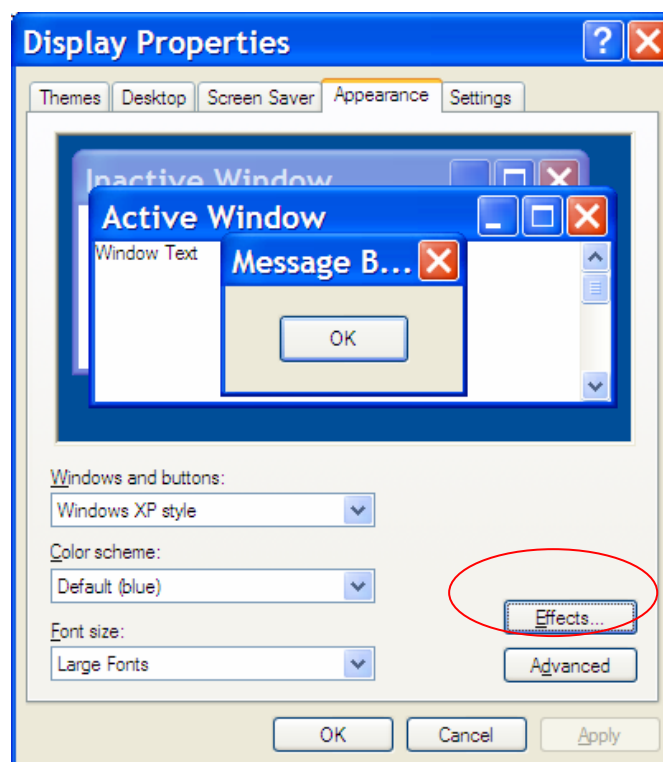


Larger Desktop Icons & Fonts in Windows XP

a. Enabling larger desktop icons.

You can set Windows XP to display the desktop icons in a larger size for easier vision. You can do this by doing the following:

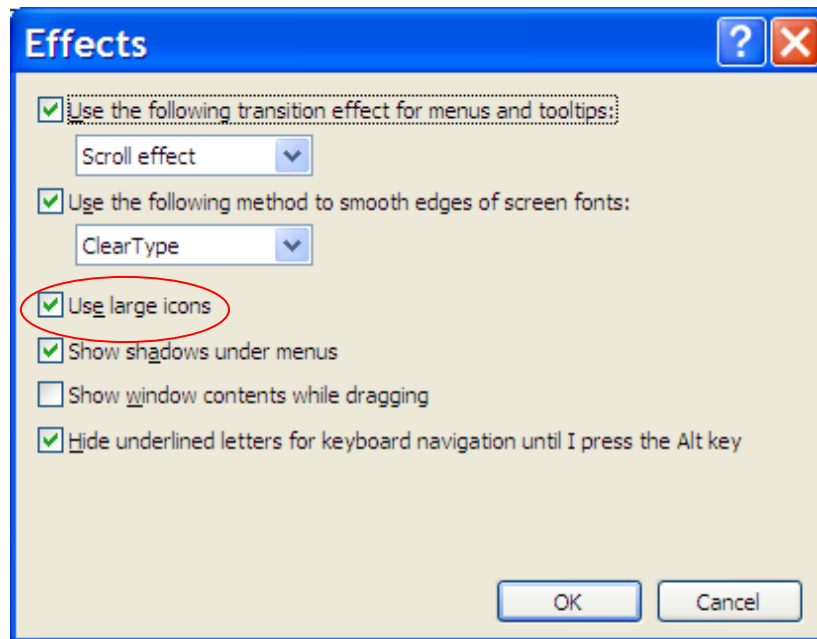
START MENU → SETTINGS → CONTROL PANEL → DISPLAY.



Select the "APPEARANCE" tab.

Click on the "EFFECTS" button.

Please Note: This information is provided for the purposes of information only, and should not be construed as a recommendation. Prices and details are subject to change so please confirm details with supplier.

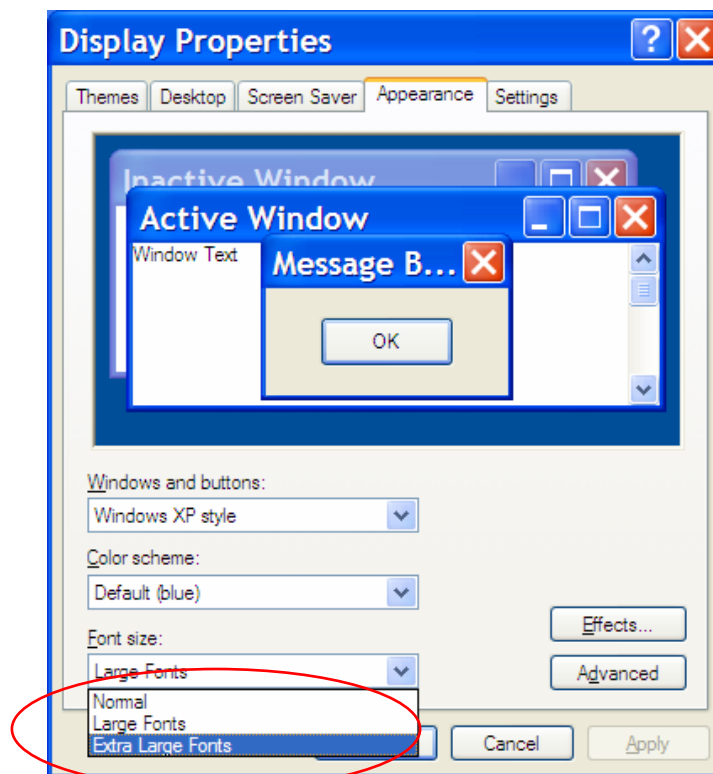


Tick the box 'USE LARGE ICONS'.

b. Enabling larger desktop fonts.

You can adjust the size of the default font for icons and menu bars on Windows XP. You can do this by doing the following:

START MENU → SETTINGS → CONTROL PANEL → DISPLAY.



Click on "FONT SIZE" and select "Extra Large Fonts".

Please Note: This information is provided for the purposes of information only, and should not be construed as a recommendation. Prices and details are subject to change so please confirm details with supplier.